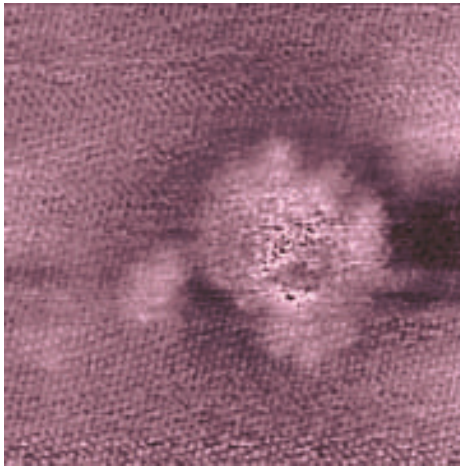


Defects in MoS₂ crystals

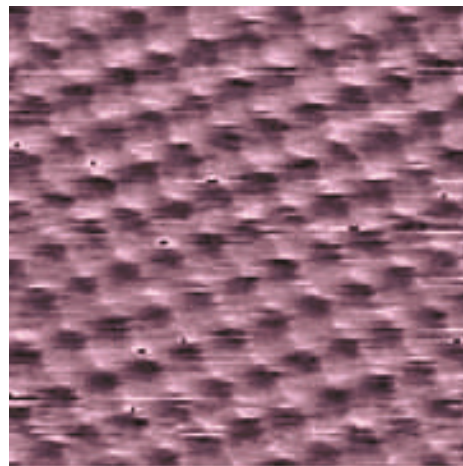
Nanosurf® STM Application Note

Natural MoS₂ crystals were cleaved prior to the STM experiment. The measurements have been carried out under ambient conditions. Typical tunneling parameters were 1.6nA tunneling current and 0.35V gap voltage.

STM measurements on MoS₂ (raw data)



scan size: 14 nm



scan size: 3 nm

Some nanometre sized inclusions were found within the atomically resolved crystal lattice.