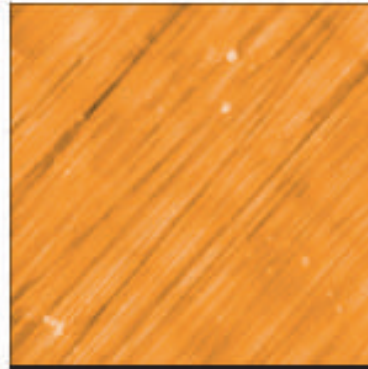


High-quality surface finish

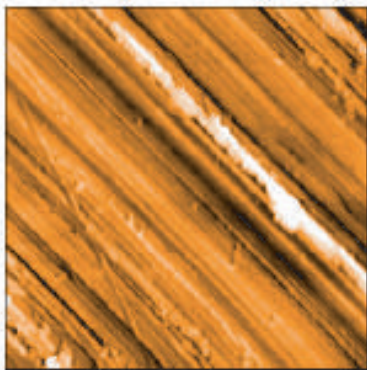
Nanosurf® AFM Application Note

Profilometer measurements become meaningless on samples with a high quality surface finish. The easyScan DFM can be used to characterise such samples.

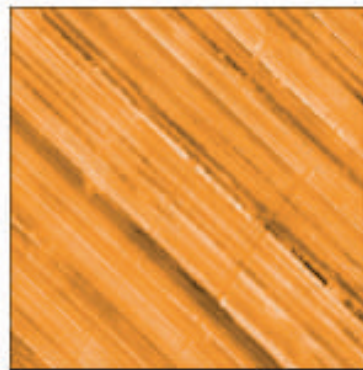
The easyScan STM sample holder is an example of a part with such a surface finish. Two different finishes (hand lapping and machine lapping) and several different materials were compared to find the optimal cost-quality balance for the sample holder.



**Sample A
handmade**



**Sample A
machine made**



**Sample B
machine made**

Measurements were made with a Large Scan DFM head with standard measurement settings.